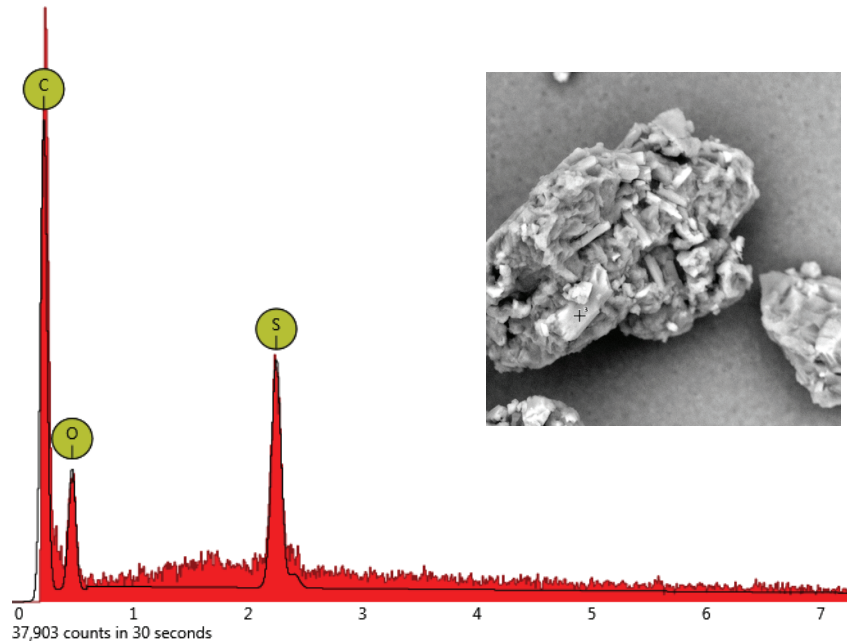


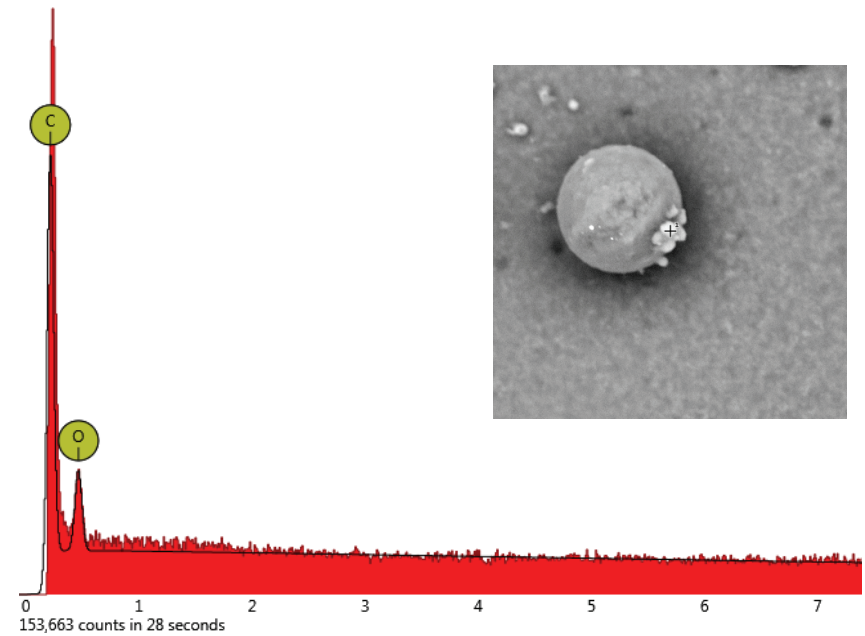
# Taste masking efficiency

## Case study

### Hot Melt Extrusion + Milling



### Spray Congealing

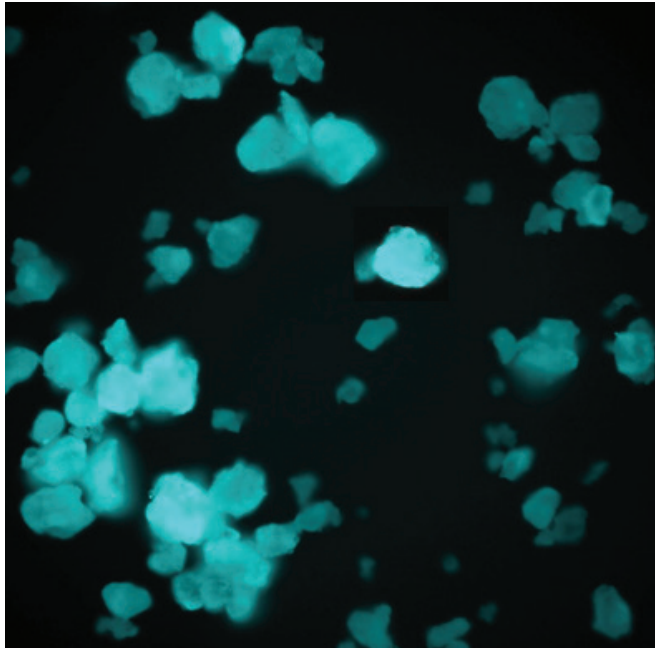


- The low drug content on the surface of the spray congealed microparticles was confirmed by SEM-EDS where no sulfur peaks were detected, whereas been revealed for extruded materials.
- Spray congealing proved to be more efficient in taste masking for the same API / excipient ratio

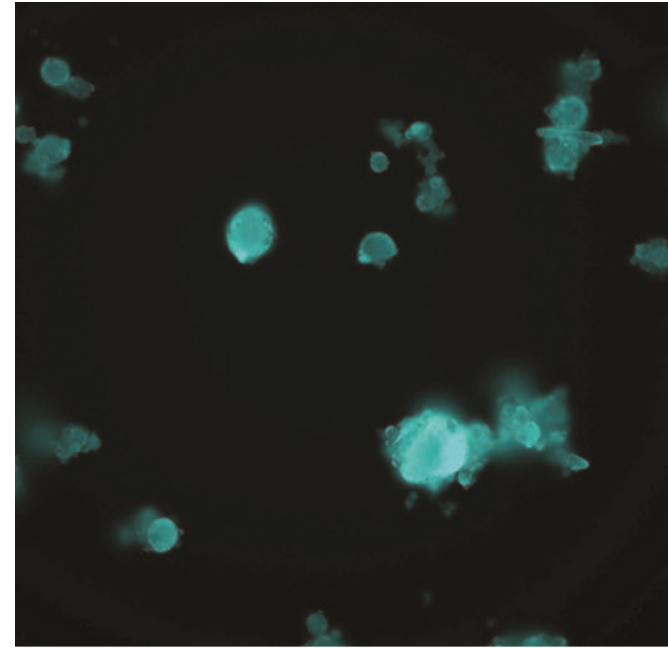
# Taste masking efficiency

## Case study

Hot Melt Extrusion + Milling



Spray Congealing



- The images obtained by fluorescence microscopy revealed a higher fluorescence intensity for the extruded material.
- Spray congealing proved to be more efficient in taste masking for the same API / excipient ratio